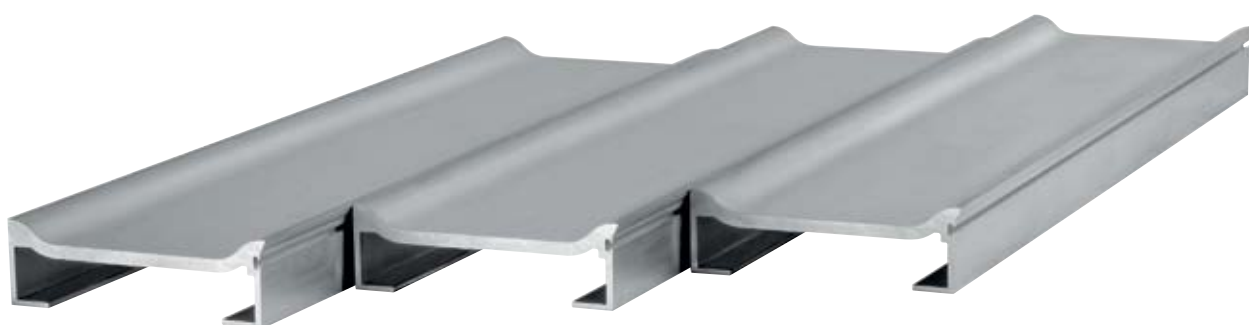




Subject: **Cargo Bulk mover aluminum**
Type : **HD, HD SEALLESS, XHDI**



8-20/156,8 mm. HD (Heavy Duty)



11-33/156,8 mm. HD SEALLESS



10-22/156,8 mm. XHDI (X-treme Heavy Duty Impact)



8-20/156,8 mm. HD (Heavy Duty) aluminum floor profile

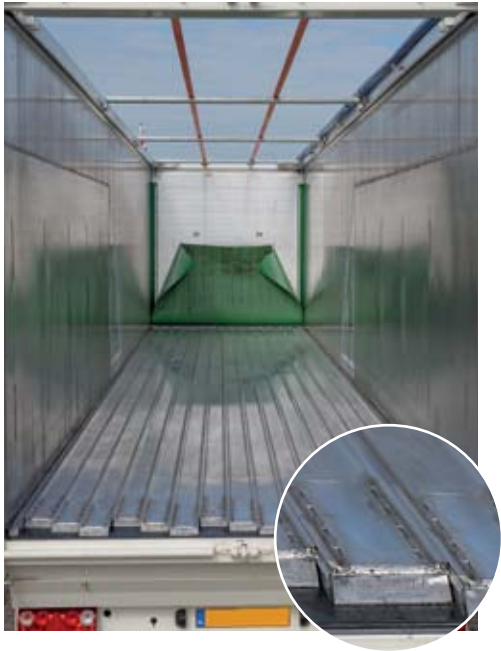


The unique 8-20 mm. HD “Heavy Duty” floor profile has especially been developed for the waste industry, but in practise also has proven itself to be very suitable for the transport of all kinds of bulk materials. Because of the special design and round shapes the HD floor profile is almost leak free and therefore the best solution for the transport of all kinds of waste; among which glass, sand and stone. Even metal scrap can be transported. Because of the unique design the product is constantly pushed away from the seams between the profiles; the product is, so to speak, forced to the middle of the floor profile instead of the seams. Because of this the product does not come into contact with the high grade seal and this result also in an almost leak free floor.

Multi employable	Leakproof	Cleanability	Pallet transport only forklift	Drive over with a fork lift truck	Impact resistance

To summarise the HD floor profile has following advantages:

- Strong and stable profile with low own weight;
- Efficient and clean unloading;
- Less wear between the floor profiles;
- Optimal protection of the seal;
- Suitable for abrasive materials;
- Low cost of ownership;
- High impact resistance;
- Large moving floor surface;
- No wear to the vehicle construction;
- Simple mounting;
- Less leakage;
- Suitable for a running head board.



APPLICATIONS

8-20/156,8 mm. HD (Heavy Duty) aluminum floor profile

This profile is a so called dedicate profile. This means this is a profile that has been especially designed for the transport of special (mostly extreme) products. Because of the two protruding round merlons this profile has a very high impact resistance and the special round shape makes it easy to clean. Moist and dusty parts flow back into the so called barrel shape, so moist, mud and dust can simply drain to the outside. This also protects the seal extra.

Because of the low weight a perfect pay load ratio remains. This profile is less to not suitable for the transport of pallets and packaged goods.

The HD profile is suitable for the transport of almost all kinds of basis bulk materials, but next to this is also especially designed for the transport of:

- Domestic waste;
- Materials suitable for recycling;
- Lightweight steel scrap;
- Gravel;
- Waste containing glass;
- Aluminum scrap;
- Sand;
- Glass.

WEIGHT

A complete floor for a trailer with a length of 13.600 mm, consisting of 15 floor profiles of the type 8-20/156,8 mm. HD, weighs 984 kg. (profile per meter weighs \pm 4.94 kg.)

Article no. 79.5208



11-33/156,8 mm. HD SEALLESS aluminum floor profile



The 11-33-HD SEALLESS is originally based on the unique 8-20 HD “Heavy Duty” floor profile, which is previously mentioned on page 2, and is also developed for the waste industry. The main difference is that this profile is supplied without seal. This SEALLESS version of the HD profile is profiled in such a way that it unloads very cleanly and furthermore the profile is almost leak free. Because of this the SEALLESS floor is the solution for the transport of all kinds of waste; especially for glass, sand and stone. Metal scrap, in contrast to the 8-20 HD and the XHDI profiles, can NOT be transported with the SEALLESS floor. There the self greasing high grade UHDPE bearing of the Cargo Floor System does not come into contact with the goods that are transported, it will remain clean and no extra wear can arise!

Multi employable	Leakproof	Cleanability	Pallet transport	Drive over with a fork lift truck	Impact resistance

- To summarise the HD SEALLESS floor profile has following advantages:**
- NO SEAL;
 - Very robust profile with a relatively low own weight;
 - Efficient and clean unloading;
 - Almost no wear between the floor profiles;
 - Suitable for abrasive materials;
 - Low cost of ownership;
 - High impact resistance;
 - Large moving floor surface;
 - No wear to the vehicle construction;
 - Simple mounting.



APPLICATIONS

11-33/156,8 mm. HD SEALLESS aluminum profile

This profile is a so called dedicate profile. This means this is a profile that has been especially designed for the transport of special (mostly extreme) products. Because of the two protruding round merlons this profile has a very high impact resistance and the special round shape makes it easy to clean. Moist and dusty parts flow back into the so called barrel shape, so moist, mud and dust can simply drain to the outside and will hardly seep through the floor. Because of the low weight a prefect pay load ratio remains. This profile is NOT suitable for the transport of pallets and packaged goods, not even with the help of a fork lift truck!

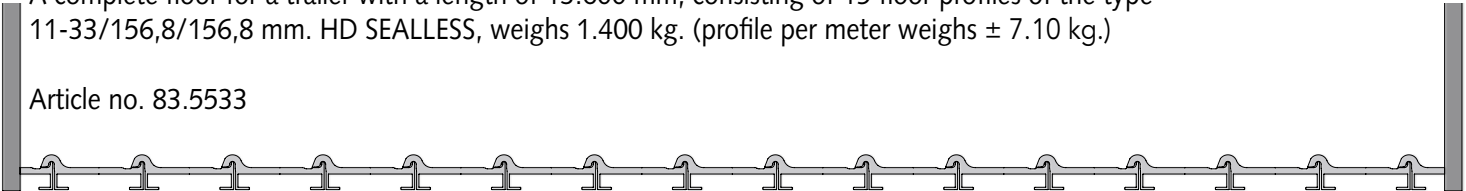
The HD SEALLESS profile is suitable for the transport of almost all kinds of basis bulk materials, but next to this is also especially designed for the transport of:

- | | | |
|-------------------|-------------------------------------|-----------|
| • GLASS; | • Waste containing glass; | • Sand; |
| • Domestic waste; | • Materials suitable for recycling; | • Gravel. |

WEIGHT

A complete floor for a trailer with a length of 13.600 mm, consisting of 15 floor profiles of the type 11-33/156,8/156,8 mm. HD SEALLESS, weighs 1.400 kg. (profile per meter weighs ± 7.10 kg.)

Article no. 83.5533



10-22/156,8 mm. XHDI (X-treme Heavy Duty Impact) aluminum profile



This is the ultimate Heavy Duty profile which is specially developed as an alternative for the steel floor profiles. This profile has an extreme high impact resistance and because of the shape and profile thickness is protected against extreme wear for very long. This profile too has proven itself in practise to be very suitable for the transport of almost all kinds of bulk materials. The basic advantages of the form and leakproofness are the same as the HD profile, however this profile is developed for the transport of extreme products that are very abrasive. This profile is also almost leakage free and is therefore the floor solution for the transport of all kinds of waste: among which stones, metals scrap, electro motors and such. There the self greasing high grade UHDPE bearing of the Cargo Floor System does not come into contact with the goods that are transported it will remain clean and no extra wear can arise!

Multi employable	Leakproof	Cleanability	Pallet transport only forklift	Drive over with a fork lift truck	Impact resistance

To summarise the XHDI (X-treme Heavy Duty Impact) floor profile has following advantages:

- Efficient and clean unloading;
- Less wear between the floor profiles;
- Optimal protection of the seal;
- X-tremely suitable for abrasive materials;
- Low cost of ownership;
- X-treme high impact resistance;
- Large moving floor surface;
- No wear to the vehicle construction;
- Simple mounting;



APPLICATIONS

10-22/156,8 mm. XHDI (X-treme Heavy Duty Impact) aluminum profile

This profile is a so called dedicate profile. This means this is a profile that has been especially designed for the transport of special (mostly extreme) products. Because of the three protruding round merlons this profile has a very high impact resistance and the special round shape makes it easy to clean. Moist and dusty parts flow back into the so called barrel shape gutters, so moist, mud and dust can simply drain to the outside and will hardly leak through the floor. This also protects the seal extra.

Because of the low weight a prefect pay load ratio remains. This profile is less suitable for the transport of pallets and packaged goods, these need to be loaded and unloaded with the help of a fork lift truck.

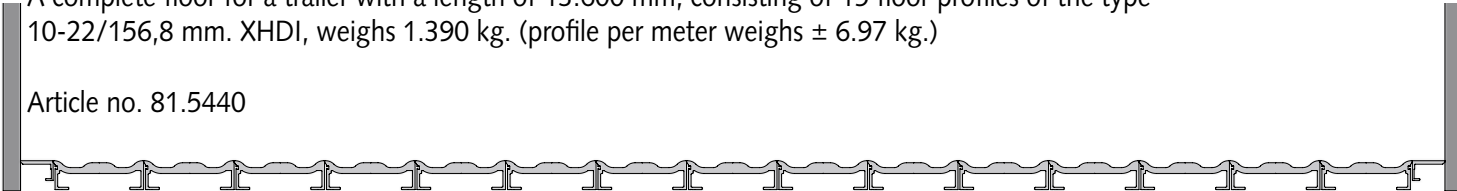
The XHDI profile is suitable for the transport of almost all kinds of basis bulk materials, but next to this is also especially designed for the transport of:

- Domestic waste;
 - Waste containing glass;
- Materials suitable for recycling;
 - Aluminum scrap;
- Steel scrap;
 - Construction and demolition waste;
- Sand;
 - Gravel.

WEIGHT

A complete floor for a trailer with a length of 13.600 mm, consisting of 15 floor profiles of the type 10-22/156,8 mm. XHDI, weighs 1.390 kg. (profile per meter weighs ± 6.97 kg.)

Article no. 81.5440



Cargo Bulkmover

Primarily for loose products

Because the floor profiles of the Cargo Bulkmover are wider than the standard 21 floor profile execution this concept is not suitable for the loading and unloading of pallets and paper reels with the help of the floor movement of the Cargo Floor system. Of course pallets eg. can be loaded - and unloaded - by driving a hand pallet truck or fork lift truck over the floor. More than 20 years of experience with the wide floor profiles, mainly in stationary factory applications, has proven that the 15 profile Bulkmove version of the Cargo Floor system is extremely suitable for the efficient unloading of most common loose products in large volumes.

Efficiency/output

Efficiency of loading and unloading (packed) cargo is determined mainly by the flatness and the even weight distribution of the cargo over the floor area of the Cargo Floor. Uneven weight distribution will reduce efficiency and may even cause the cargo to only move back and forth within the power stroke of the system. Uneven cargo weight distribution can be compensated by using supports to spread the weight evenly across the floor profiles. The system's operating speed can also affect loading and unloading efficiency.

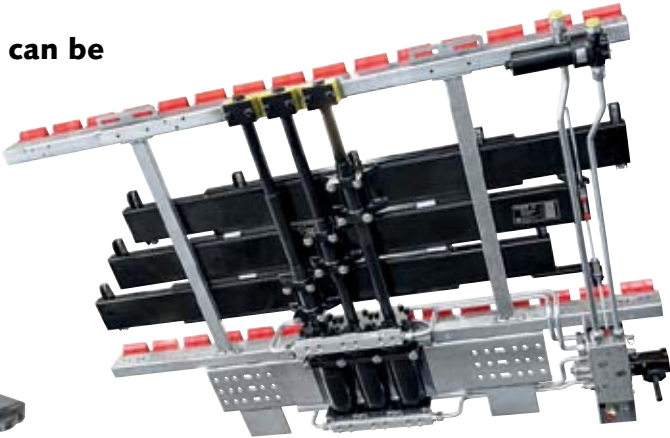
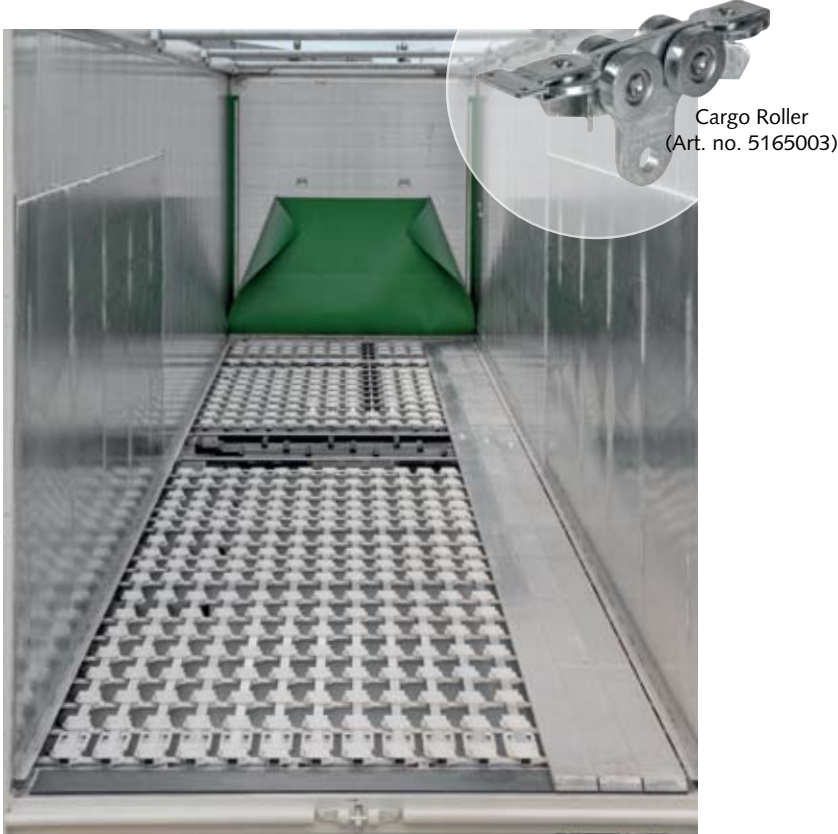


Drive systems and executions

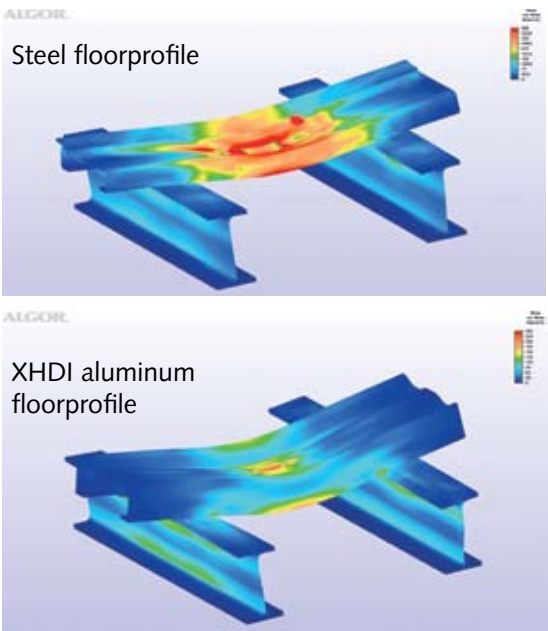
The HD, HD SEALLESS and XHDI aluminum profile can be used with the following Cargo Floor drive systems:

- CF500 SL-C Cargo Bulkmove
- CF500 SL-C Cargo Bulkmove Power Speed
- CF800 HD
- CF3 LP-2

These profiles have a width of 156,8 mm. which have been especially developed for the **Cargo Bulkmove** drive system.







FEM (finite element method) makes it very clear that, in the same conditions, the XHDI aluminum floorprofile has a higher resistance moment against bending than a steel profile.



Driving over the floor with a fork-lift truck

In principle all Cargo Floor floors can be driven over by a fork-lift truck; contact your body builder for information about the permitted weights!

These bearings are available with the Cargo Bulkmove system:			
Twister Wide 40/25		Snap-on	Bearing Block
			
tube (alu. or steel) 40x25x2 mm.		special alu. U-profile 25x25 mm.	direct mounting on alu. or steel crossmember



CARGO FLOOR®
HORIZONTAL LOADING-/UNLOADINGSYSTEM

Cargo Floor B.V.
Byte 14
7741 MK COEVORDEN
The Netherlands
Telefoon +31 (0)524-59 39 00
www.cargofloor.com
E-mail: info@cargofloor.com



**WORLDWIDE
SERVICE NETWORK**